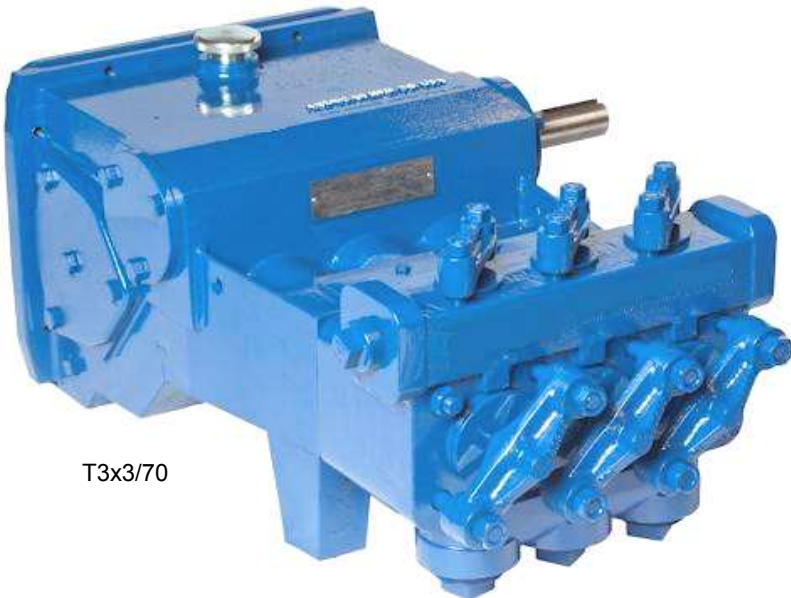
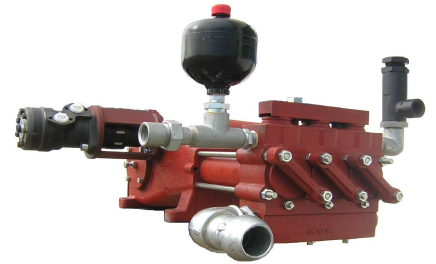


# Core drill pumps and pumping units



T3x3/70



T3x3/62with Hydraulic motor

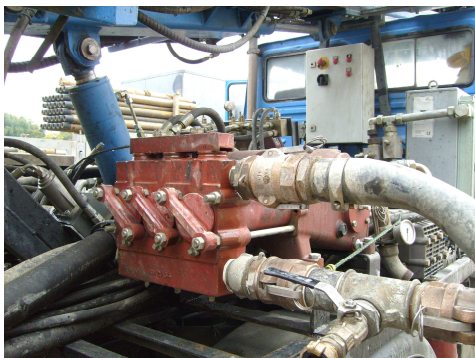
## Pump Data and Specification

Capacity ltr/ min	Pump Typ	rpm	Ratio i	ltr / stroke	Power kW	Driver	Weigth Kg	Valve type
169 x 50	T3x3/62 *	600	2,57	0,724	16	Hydraulic	132	Ball
227 x 30	T3x3/72 *	600	2,57	0,976	13	Hydraulic	132	Ball
225 x 50	T3x3/70	1020	3,6	0,80	23	Hydraulic	208	Ball + spring
266 x 50	T3x3/70	1200	3,6	0,80	28	Hydraulic	208	AR
380 x 60	T3x4/75	1250	3,94	1,20	45	Hydraulic	315	AR
500 x 60	T3x4/75	1750	3.94	1,20	60	Hydraulic	315	AR

- Obsolete end 2009
- T3x3/62 and /72 equal P29

Driver E-motor or diesel with gearbox for all types available.

Pump data based on 100% volumetric and 85% mechanical efficiency.



T3x3/62



T3x3/70 with 4 speed gearbox



T3x4/75 in 6 ft Container

May 2009

### Marindco Deutschland GmbH

Wrister Straße 24  
D 24576 Weddelbrook

Tel: +49 ( 0 ) 4192 897 100  
Fax: +49 ( 0 ) 4192 897 153

e-mail: [info@marindco.de](mailto:info@marindco.de)  
Internet: [www.marindco.de](http://www.marindco.de)